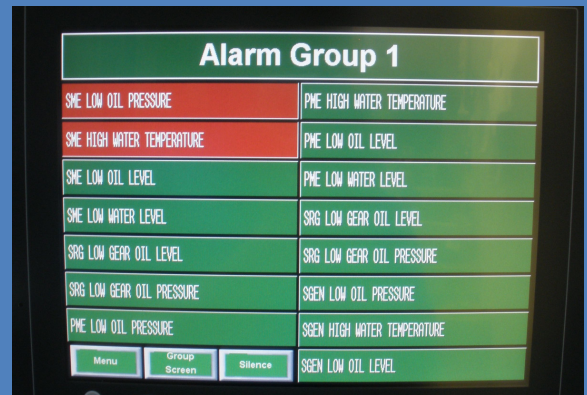
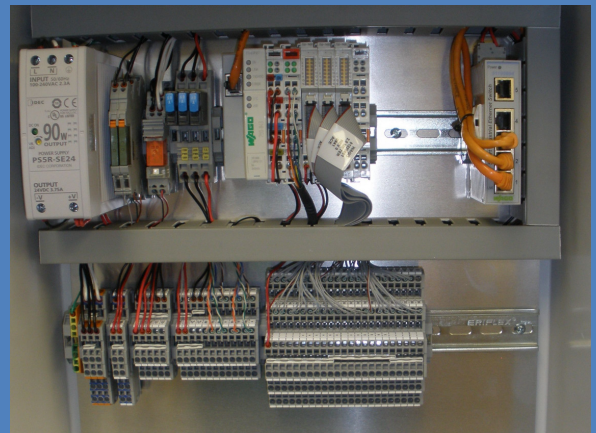


# SIM-VUE PRO

User Programmable Alarm system



Alarm Group 1	
SWE LOW OIL PRESSURE	PWE HIGH WATER TEMPERATURE
SWE HIGH WATER TEMPERATURE	PWE LOW OIL LEVEL
SWE LOW OIL LEVEL	PWE LOW WATER LEVEL
SWE LOW WATER LEVEL	SRG LOW GEAR OIL LEVEL
SRG LOW GEAR OIL LEVEL	SRG LOW GEAR OIL PRESSURE
SRG LOW GEAR OIL PRESSURE	SGEN LOW OIL PRESSURE
PWE LOW OIL PRESSURE	SGEN HIGH WATER TEMPERATURE
Menu	SGEN LOW OIL LEVEL



*Need multiple systems monitored?*  
**With 15-45 points, we can monitor what you want monitored.**

*Can't modify your existing system?*  
**Expansion is simple- we design, assemble, install, and service our equipment.**

*Want more control over your existing equipment?*  
**Event logs and adjustable alarm timing are included.**

Marine Alarm Specialists

## Highlights

End User or installer programmable alarm names, time delay, normally open or normally closed sensor

15-45 point

4 RPM and 2 Digital Arming Inputs

Up to 15 touch screens per system

8.4", 10.4", 12.1", or 15" high resolution touch screens

On screen adjustment of timing and normally open or normally closed sensor

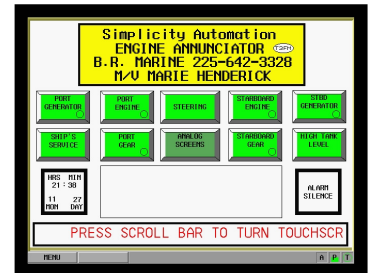
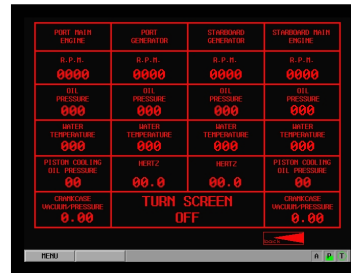
Alarm Override to temporarily lockout nuisance alarms or broken sensor

Leveled password protection

## BATON ROUGE MARINE ELECTRICAL SERVICE, INC.

865 HWY. 30 SAINT GABRIEL, LA, 70776

PHONE (225)642-3328 Fax (225)642-9897 www.brmes.com



## We can monitor it.

We are *not* your everyday reseller.

Here at **BRMES**, we **design, assemble, install, and service** our equipment. We keep sensors, relays and other materials used with our systems **in stock**. So, now and in the future, we can take care of **all** your monitoring needs.

## SIM-VUE Features

- All points on this system have an independent and on screen adjustable alarm name, alarm time delay, and normally open or normally closed sensor settings.
- Any point in the system can be armed using any of the six available inputs.
- Includes gauge screen with four tachometers displayed.
- When an alarm is activated, event logs record the time, date, and frequency.
- Alarm Override locks a particular point to avoid nuisance alarms from a faulty sensor until a technician can make necessary repair.
- This system includes on screen terminal wiring description.
- User help logs feature some of the basic information on system functions and features.
- Vital settings and configurations are password protected (2 levels that allow the end user to determine which personnel get access to which functions).
- HMI backlight dimmer for custom brightness in any situation.