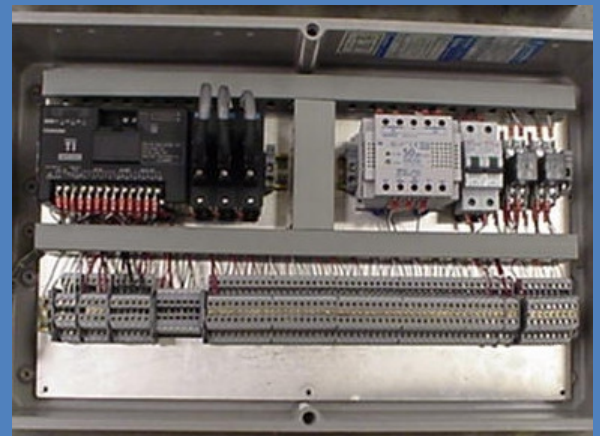


# SIM-VUE and SIM-VUE

*Lite*



*Need multiple systems monitored?*  
**With 1-60 points, we can monitor what you want monitored.**

*Can't modify your existing system?*  
**Expansion is simple- we design, assemble, install, and service our equipment.**

*Want more control over your existing equipment?*  
**Event logs and adjustable alarm timing are included.**

## BATON ROUGE MARINE ELECTRICAL SERVICE, INC.

865 HWY. 30 SAINT GABRIEL, LA, 70776

PHONE (225)642-3328 Fax (225)642-9897 www.brmes.com

## Highlights

Gauge packages, hour meters, maintenance hour meters

1-60 points

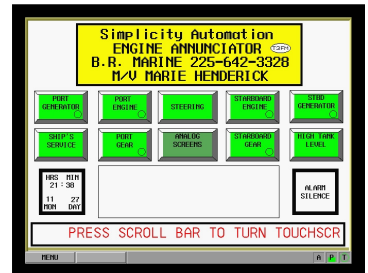
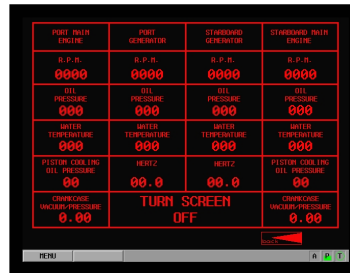
Dry contact or analog sensors

Up to 15 touch screens per system

8.4", 10.4", 12.1", or 15" high resolution touch screens

On screen adjustment of timing and alarm settings

Leveled password protection



## We can monitor it.

We are *not* your everyday reseller.

Here at **BRMES**, we **design, assemble, install, and service** our equipment. We keep sensors, relays and other materials used with our systems **in stock**. So, now and in the future, we can take care of **all** your monitoring needs.

## SIM-VUE Features

- This system includes hour meters and maintenance hour meters.
- All points on this system have an independent and on screen adjustable alarm time delay.
- All engine low oil pressure alarms have an arming feature that eliminates false alarms on engine shut down.
- All analog pressure, temperature, level, and voltage alarms feature on screen adjustment of alarm setting.
- Multiple acknowledge locations can be used (different silencing configurations available.)
- The event logs record the time and date when an alarm is activated and acknowledged.
- This system includes on screen terminal wiring description.
- User help logs feature some of the basic information on system functions and features.
- Vital settings and configurations are password protected (4 levels that allow the end user to determine which personnel get access to which functions).

## SIM-VUE *Lite* Features

- All points on this system have an independent and on screen adjustable alarm time delay.
- When an alarm is activated, event logs record the time and date.
- This system includes on screen terminal wiring description.
- User help logs feature some of the basic information on system functions and features.
- Vital settings and configurations are password protected (2 levels that allow the end user to determine which personnel get access to which functions).